



Linz in
numbers
2007/2008

Table of Contents

| | |
|--|----|
| ■ History of Linz | 4 |
| ■ Partner Cities of Linz | 7 |
| ■ Location and surface area | 8 |
| ■ Inhabitants | 9 |
| ■ Buildings/Apartments | 10 |
| ■ Social matters | 10 |
| ■ Social facilities | 11 |
| ■ Health | 16 |
| ■ Sports and leisure | 17 |
| ■ Culture | 20 |
| ■ Education | 23 |
| ■ Economy | 25 |
| ■ Tourism | 27 |
| ■ Environment | 28 |
| ■ Transport | 30 |
| ■ Transport system | 32 |
| ■ Supplying of heat, electricity, etc. and waste removal | 34 |
| ■ Politics | 36 |
| ■ Budget | 39 |
| ■ Consortium of the City of Linz | 41 |
| ■ Municipal authorities of Linz | 41 |
| ■ Subsidiaries (100%) | 42 |
| ■ Participations | 44 |
| ■ Contacts for services | 46 |

Statistical material, unless otherwise indicated, is from the end of 2007.
Units of measurement employed: ha = hectare, $\mu\text{g}/\text{m}^3$ = microgram per cubic meter, t = metric ton.



“In the last years the social, economic and cultural development of Linz has been excellent. The abundance of green space, the dense network of social and leisure-time facilities, the extensive educational offerings and low household costs make Linz a lovable city and a great place to live. The figures in this brochure show that this is by no means an exaggeration!”

A handwritten signature in blue ink, which appears to read 'F. Dobusch'.

Franz Dobusch
Mayor of the city of Linz



■ History of Linz

799: For the first time the names “Linz” and “St. Martin’s Church” are mentioned in an official document.

1490: For the first time “Linz” is designated as the capital of the province “Österreich ob der Enns” (“Austria on the Enns River”).

1848: Disturbances as a result of the revolutionary events in Vienna, the first election of a mayor by a committee of the community (census voting right – only men are entitled to vote).

1873: Incorporation of Lustenau und Waldegg into Linz

1915: Incorporation of St. Peter into Linz

1919: Incorporation of Urfahr und Pöstlingberg into Linz, General right to vote with equality for everybody – including women.

1923: Incorporation of Kleinmünchen into Linz

1934: Civil war breaks out, February battles

1938: Annexation of Austria by Germany, building up of the defence industry, Incorporation of Ebelsberg and St. Magdalena into Linz

1939: Incorporation of Keferfeld into Linz
Founding of the city music school

1945: End of the war, beginning of the period of occupation (Americans and Soviets)

1947: Foundation of the adult education centre
Foundation of the art school

1950: The city music school is reopened.

1955: End of the period of occupation.

1962: Foundation of the College of Social and Economic Sciences – since 1972 Johannes Kepler University of Linz

1973: The art school is renamed Art College – since 2000 Art University of Linz

1974: Opening of the Brucknerhaus (concert hall)
Opening of the city and sports hall (stadium)

1984: Opening Posthof 1 (modern theatre and music)

1985: Opening of the New City Hall

1990: Opening of Posthof 2 (modern theatre and music)

1994: Opening of the Design Center (commercial exhibitions and fairs)
Opening of the Senior Citizens' Centre in the Kleinmünchen District
(first of the “new generation” of such homes)

1996: Opening of the Ars Electronica Center (museum of electronic art)

1997: Opening of the Old City Hall (renovated)

2000: The foundation of LINZ plc. by combining ESG and SBL (energy and public transportation)
Opening of the Ebelsberg bypass (Expressway)

2001: Extension of the streetcar line to Ebelsberg

2002: Conclusion of the fourth and final construction phase of the General Hospital (AKh) after a total of 20 years of construction work.

2003: Opening of Lentos (Art Museum)
Opening of the Intersport Arena (sports stadium)

2004: Opening of the new Central Train Station of Linz
Opening of the subterranean section of a streetcar line (between Blumau and Bulgariplatz).

2005: Large-scale reform of the administration of the city government
Extension of the streetcar line to solarCity

2006: The foundation of the AKh Linz Ltd (for the General Hospital of Linz)
The foundation of “Senior Citizens’ Centres of Linz Ltd.”

2007: Opening of the “Wissensturm” (Tower of Knowledge – Adult Education Centre and central headquarters of the city library)
Opening of the landscape-park Bindermichl-Spallerhof

2008: Since 1991 14 new senior centres (8 municipal and 6 private ones) have been built.

■ Partner Cities of Linz

since 1975 Halle an der Saale (Germany)
www.halle.de

since 1977 Gabès (Tunisia)

since 1983 Saporoshje (Ukraine)

since 1983 Chengdu (China)
www.chinats.com/chengdu/

since 1987 Linz am Rhein (Germany)
www.linz-rhein.de

since 1987 Budweis (Czech Republic)
www.budweb.cz

since 1988 Kansas City, Kansas (USA)
www.kansascity.com

since 1988 San Carlos (Nicaragua)

since 1991 Kwangyang (South Korea)

since 1992 Modena (Italy)
www.comune.modena.it

since 1993 Nishnij Nowgorod (Russia)

since 1995 Berlin-Charlottenburg (Germany)
www.berlin-charlottenburg.de

Norrköping (Sweden) together with
Linköping (Sweden)
www.norrkoping.se
www.lingkoping.se

Tampere (Finland)
www.tampere.fi

since 2008 Albufeira (Portugal)
www.cm-albufeira.pt

■ Location and surface area

Geographical location

| | |
|----------------------------------|-----------|
| Northern latitude | 48°18'11" |
| Eastern longitude | 14°17'26" |
| Average altitude above sea level | 260 m |

Surface area 9,598 hectares

Of that amount:

| | |
|--------------------------|-----------------------------|
| green space and woodland | 5,930.60 hectares (61.79 %) |
| Bodies of water | 580.78 hectares (6.05 %) |
| Buildings | 1,220.49 hectares (12.72 %) |
| Other areas | 1,866.09 hectares (19.44 %) |

Source: Statistik Austria (Status 2005)

■ Inhabitants

Main place of residence 189.528

Distribution of sexes

| | | |
|-------|--------|--------|
| Women | 99,504 | 52.5 % |
| Men | 90,024 | 47.5 % |

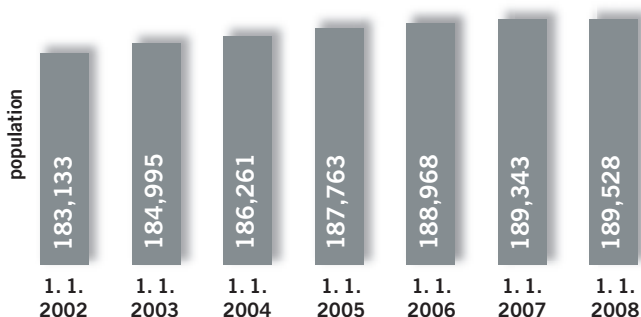
Age group distribution

| | | |
|----------------|---------|--------|
| 0 to 14 years | 25,297 | 13.3 % |
| 15 to 59 years | 117,794 | 62.1 % |
| over 60 years | 46,437 | 24.6 % |

| | |
|--------|-------|
| Births | 1,836 |
| Deaths | 1,997 |

(Status 1. January 2008)

Population Development from 2002 to 2007



■ Buildings/Apartments

Buildings and apartments

| | |
|--|---------|
| Buildings | 22,539 |
| Apartments | 106,042 |
| Number of apartments of registered cooperative societies | 49,549 |
| Owner-occupied apartments | 15,611 |
| Other apartments | 40,882 |
| Apartments with gas heating | 41,652 |
| Apartments with district heating | 59,241 |
| Number of subsidized elevators installed since 1996 | 797 |

■ Social matters

In millions of euros

Social expenditures in the municipal budget

| | |
|--|---------------|
| | Expenditures |
| Total | 154.13 |
| Of that amount | |
| Services for children and adolescents | 31.53 |
| Social benefits (closed facilities) | 55.04 |
| Social benefits outside of closed facilities | 9.23 |
| Aid for education in facilities | 7.90 |
| Aid for education in families | 1.85 |
| Mobile services | 5.89 |
| Social help work | 2.77 |
| Meals on wheels | 1.08 |
| Transfer payments to province of Upper Austria | 19.30 |
| Other | 19.54 |

SZL: Senior centres of Linz Ltd.

| | |
|--------------|--------------|
| | Expenditures |
| Total | 35.48 |

Investment in social matters

| | |
|--------------|--------------|
| | Expenditures |
| Total | 10.30 |

■ Social Facilities

Children and adolescents – City of Linz

| | Places available for children (adolescents) |
|---|---|
| 7 Centres for 1-3 year old infants | 370 |
| 47 Nursery schools | 3,500 |
| 31 After-school care centres | 3,039 |
| Home for children and adolescents Johannesgasse | 24 |
| Shared-housing facility for adolescents SISAL | 8 |

Mother-child-home (max. 30 places) 12 apartments

| | Visits |
|---|--------|
| Family centre Pichling | 15,703 |
| Parent-child-centre Ebelsberg | 22,128 |
| 15 counselling facilities for parents and mothers | 18,753 |
| Institute for counselling of families and adolescents | 4,508 |

Educational counselling, child-psychological diagnoses, psychotherapy for children, family counselling and -therapy, legal counselling concerning questions of family law, etc.

First love emergency centre of the Children and Adolescent Services Dept. and the General Hospital
176 consultations

Children and adolescents - private

| | Places available |
|------------------------------------|------------------|
| 8 Centres for 1-3 year old infants | 140 |
| 1 Caritas | 10 |
| 7 other agencies | 130 |
| 43 Nursery schools | 1,948 |
| 23 Caritas | 1,080 |
| 20 other agencies | 868 |
| 26 Day-care mothers | 68 |

| | |
|-----------------------------|------------|
| 8 After-school care centres | 516 |
| 3 Caritas | 317 |
| 5 other agencies | 199 |

| | |
|-------------------------------|-------------------|
| | Visitors |
| 9 Parent-child centres | ca. 65,000 |
| 5 “Kinderfreunde” | ca. 21,000 |
| 3 OÖ “Familienbund” | ca. 24,500 |
| 1 Parent-child centre of Linz | ca. 20,000 |

Association “Jugend und Freizeit” (Youth and Leisure)

- 12 Youth clubs
 - 7 Adolescent counselling facilities
 - 1 Project for teenagers
 - 1 Cooperation project “Zoom” (together with the “Meeting Place for Workers in the Central Area of Linz”, which is operated by the diocese of Linz)
 - 3 Street work projects

Financing: 70 %: City of Linz, 29 %: Province of Upper Austria, remainder: Austrian Federal Government and earnings of the projects and facilities. The street work projects constitute an exception; they are solely financed by the city and the province (50 % each).

Association for Preventive Social Work and Community

| | |
|---|--------------|
| | Participants |
| move - Job-finding project | 123 |
| 100 % City of Linz | |
| time - Meeting place for exchange of services | 70 |
| 100 % City of Linz | |

sebou - Boutique for Senior Citizens

100 % City of Linz

kick - Measures for finding employment for adolescents 82

50 % City of Linz, 50 % Province of Upper Austria, the costs of living of the adolescents are covered by the federal employment agency “AMS”.

woman – Counselling for women 199

City of Linz 31 %, Province Upper Austria 17.5 %, federal employment agency (AMS) 41 %, Federal Chancellery for Women 10.5 %

| | |
|---|---------------------|
| factory - production school | 129 |
| Province Upper Austria 51 %, federal employment agency (AMS) 49 % | |
| learn – Learning centre | 50 |
| 83 % Federal Ministry for Schools, Art and Culture; 14.7 % European Social Fund (ESF); 2.3 % Province Upper Austria | |
| Bily – Counselling for youth and families and on sexual matters | |
| | 1,452 Consultations |

Senior Citizens - City of Linz

Senior Centres of Linz Ltd.

| | |
|--|---------------------------------|
| | Places available in these homes |
| 8 Senior centres (SC) for care and nursing | 1,286 |
| SC Kleinmünchen | 131 |
| SC Dornach | 131 |
| SC Neue Heimat | 128 |
| SC Franckviertel | 128 |
| SC Keferfeld-Oed | 90 |
| SC Ebelsberg | 30 |
| SC Spallerhof | 516 |
| SC Franz Hillinger | 132 |

3 Day-Care Centres (a total of 100 places) 23,625 Visits

17 Aktive Clubs – for senior citizens 56,076 Visits

Senior Citizens - Private Facilities

| | |
|--|-----------------|
| | Places in homes |
| 7 privately operated homes for senior citizens | 832 |
| Sonnenhof Lenaupark | 130 |
| Sonnenhof Freinberg | 128 |
| Kreuzschwestern | 105 |

| | |
|------------------------|-----|
| Caritas/Karl Borromäus | 98 |
| Caritas/St. Anna | 86 |
| Franziskusschwestern | 120 |
| Kursana* | 165 |

(70 of these have been rented by the City of Linz)

*does not belong to the Social Help Organization of the City of Linz

Apartments with care facilities **239**

| | |
|--------------------------------------|----|
| Bethlehemstraße, Central Area | 32 |
| Ferihumerstraße, Urfahr District | 32 |
| Haselgrabenweg, Urfahr District | 15 |
| Keimelmayrgut, Landwiedstraße | 37 |
| Lenaupark, Makartstraße | 15 |
| Rudolfstraße 8a, Urfahr District | 44 |
| Rudolfstraße 8 -12, Urfahr District | 28 |
| Sennweg 2, Ebelsberg District | 18 |
| SZ Neubauzeile, Neue Heimat District | 18 |

Mobile Services

Service providers

Volkshilfe, Caritas, Samariterbund, Rotes Kreuz (Red Cross), Oberösterreichisches Hilfswerk, Evangelische Diakonie (Lutheran social welfare agency), Organization “Miteinander”, with a total of 195 collaborators.

| | |
|---------------------------------|---------------|
| Home health care | 1,548 clients |
| Mobile care for senior citizens | 2,083 clients |
| Meals on Wheels (average) | 656 clients |

The city of Linz is responsible for the total coordination (assignments, controlling, initial financing and co-financing).

Counselling the Homeless

Social Organization B37

Living places, day care, counselling

117,723 overnight stays

| | |
|------|---|
| B37 | Hostel Bethlehemstraße |
| PSVN | Emergency Psychosocial Care Bethlehemstraße |
| SCHU | Temporary hostel - Schumannstraße |
| ALOA | Active Life without Alcohol |
| NOWA | Emergency sleeping places Anastasius-Grün-Straße |
| TAGO | Day-care facility Goethestraße |
| MOWO | Mobile counselling about accommodation facilities |
| ABS | Alcohol counselling facility Linz |
| PSD | Psychological service |
| OBST | Outreach work |

Further facilities for the homeless

Working group for the homeless

Lutheran social welfare work in the city

Organization “Wohnplattform” (residential platform)

Caritas - warm resting place (during the daytime)

Further social facilities

Women’s home Linz

Home for mother and child

Living quarters – social initiative

Living group “Alone with Child”

Young family – social pedagogical home for adolescents

■ Health

Hospitals

3,886 beds

| | |
|---|-----|
| General Hospital of the City of Linz (AKh) | 989 |
| Provincial neurological clinic Wagner-Jauregg | 750 |
| Provincial clinic for women and children | 268 |
| Hospital of the Merciful Sisters | 685 |
| Hospital of the “Elisabethinen” Order | 533 |
| Hospital of the Merciful Brothers | 372 |
| Deaconess -Hospital | 120 |
| Hospital for Accidents | 155 |
| Day Clinic of Linz | 14 |

Registered physicians (private practices)

Total **601**

General practitioners **185**

Specialist physicians **416**

| | |
|---|----|
| Anesthesiology | 5 |
| Ophthalmology | 26 |
| Surgery | 22 |
| Gynecology | 42 |
| Ears, nose and throat | 18 |
| Dermatology and sexual diseases | 16 |
| Hygiene and Microbiology | 1 |
| Internal Medicine | 30 |
| Pediatrics and Medicine for Adolescents | 17 |
| Laboratory diagnostics | 5 |
| Pneumology | 10 |
| Neurosurgery | 3 |
| Neurology und Psychiatry | 35 |
| Nuclear medicine | 1 |
| Orthopedics | 25 |
| Pathology | 2 |
| Physical Medicine | 1 |

| | |
|------------------------------|-----|
| Plastic Surgery | 5 |
| Radiology | 9 |
| Accident surgery | 20 |
| Urology | 13 |
| Dentistry and Orthodontics | 109 |
| Oral and Orthodontic Surgery | 1 |

In addition, 1,250 physicians work in hospitals in Linz.

| | |
|-------------------------------|-------------------|
| Women's Health Centre of Linz | 521 consultations |
|-------------------------------|-------------------|

| | |
|--|-----------------|
| Facilities of the Upper Austrian Public Health Insurance Outpatient department for special fields of medicine | 19,491 patients |
|--|-----------------|

| | |
|-------------------------------------|-----------------|
| Outpatient department for dentistry | 85,640 patients |
|-------------------------------------|-----------------|

Pharmacies: Total of 39

With 164 pharmacists

■ Sports and leisure

Officially recognized sports associations in Linz

| | |
|--|-----|
| (according to information provided by the Sports Association of the Province of Upper Austria) | 300 |
|--|-----|

| | |
|---|-----|
| Number of the above that are umbrella organizations for sports associations | 215 |
|---|-----|

| | | Members ca. |
|-------|------------------|-------------|
| ASKÖ | 103 associations | 46,000 |
| UNION | 66 associations | 40,000 |
| ASVÖ | 46 associations | 18,000 |

Sports facilities

LIVA

- | |
|--------------------|
| 1 Stadium |
| 1 Intersport Arena |

- 3 Sport parks - Lissfeld, Auwiesen, Pichling
- 4 Tennisfacilities (Stadium und Sport parks)

LINZ plc.

- 2 Halls for ice sports
- 1 Sports- und leisure facility (Ebelsberg)
- 5 Indoor swimming pools with saunas
- 4 Outdoor swimming pools
- 7 Swimming pools for children
- 3 Swimming lakes
- 3 Artificial ice rinks

| | |
|-----------------------------|---------------|
| Indoor swimming pools | 240,724 users |
| Outdoor swimming pools | 325,487 users |
| Swimming pools for children | 40,250 users |
| Sauna | 235,091 users |
| Artificial ice rinks | 76,023 users |

Facilities of the City of Linz

Open to the general public = municipal facilities, that are open for all and do not require a membership to an association.

- 111 Playgrounds for children and youths
 - 15 Basketball facilities in playgrounds for children and youths
 - 1 Basketball court
 - 1 Beach-soccer facility
 - 31 Beach-volleyball fields (18 open to the general public)
 - 3 Bicycle-motocross-facilities
 - 11 Fun-courts (multifunctional small sports facilities)
 - 1 Fun artificial grass court
 - 36 Football fields with goals on playgrounds for children and adolescents
 - 17 Running tracks (ca. 50 km, of which 31 km are lit up)
 - 9 Skating areas
 - 29 School sports facilities owned by the city (7 open to the general public)
 - 5 Amusement arcades owned by the city

- 51 City gymnasiums
- 16 Streetball facilities in playgrounds for children and youths

Associations, private

| | | |
|----|---|----------------------|
| 1 | Archery facility | Association |
| 2 | Bowling alleys | Association |
| 1 | Inline-hockey rink | Association |
| 2 | Climbing walls (BORG: TVN und ÖAV, Auwiesen: TVN and public) | Association |
| 1 | Model airplane field | Association |
| 1 | Indoor canoe and paddling pool | Association |
| 1 | Indoor rowing pool | Association |
| 2 | Horseback riding facilities | Association |
| 9 | Shooting ranges | Association |
| 1 | Gliding field | Association |
| 2 | Indoor badminton courts | Association/private |
| 2 | Driving Ranges | Private |
| 17 | Fitness-centres | Private |
| 1 | Go-cart-track (Holzstraße) | Private |
| 1 | Golf course (9 holes, Swin-Golf) | Private |
| 13 | Ninepin-bowling alleys | Associations/Private |
| 7 | Miniature golf courses | Associations/Private |
| 1 | Model car racetrack | Associations/Private |
| 2 | Squash courts | Associations/Private |
| 42 | Sports facilities of associations and firms | Associations/Private |
| 1 | Hammer throwing court | Associations/Private |
| 27 | Ice stock sport facilities (117 alleys: 37 indoors or covered by a roof)* | Associations/Private |
| 41 | Tennis court complexes (173 free places)* | Associations/Private |
| 7 | Indoor tennis court complexes (23 places)* | Associations/Private |
| 1 | Training centre (in the area "Auf der Gugl") Province of Upper Austria | |

*Some of the above facilities are also operated by the federal or provincial governments as well as by firms of the city of Linz (LIVA, LINZ plc.).

International events

| | |
|-------------------------------------|-------------------------------|
| OMV Linz Danube Marathon | more than 13,600 participants |
| Generali Ladies Tennis Grand Prix | about 28,000 spectators |
| CSIO horse- and jumping competition | more than 10,000 spectators |

■ Culture

Facilities of the city of Linz

Museums of the city of Linz

| | Visitors |
|--------------------------------------|----------|
| Lentos Art Museum Linz | 53,143 |
| Nordico – Museum of the City of Linz | 6,820 |
| LinzGenesis (history of Linz) | 8,936 |
| Ars Electronica Center | 56,000 |

LIVA - Kultur

| | Visitors |
|---|----------|
| Brucknerhaus Concert Hall | 154,950 |
| Posthof (modern music, dance and cabaret) | 81,078 |
| Rosengarten | 2,933 |
| Kuddelmuddel (for children) | 24,885 |
| of the above: | |
| Theatre for children | 14,409 |
| Puppet Theatre of Linz | 4,485 |

| | Visitors |
|--------------------------|----------|
| 15 popular culture homes | 292,597 |

Lending frequency of books and other media

Wissensturm: Adult education centre

Library of the city with 10 branches 830,289

Visitors

Archive of the City of Linz 4,071

Facilities of the province Upper Austria

Provincial Theatre (“Landestheater”) Linz

Season 2006/2007

Visitors

Large theatre stage 125,943

Second stage (“Kammerspiele”) 76,061

Small theatre in “u\hof” 14,592

“Eisenhand” Experimental theatre 10,597

Provincial culture centre Ursulinenhof 224,735

Adalbert Stifter Centre (Literature) 11,863

OK Open Culture Centre of Upper Austria 13,955

Museums of the Province of Upper Austria

Visitors

Schlossmuseum (“Castle Museum”) 88,900

Provincial Art Gallery of the
Provincial Museum 27,430

Biologiezentrum Dornach-Auhof 13,515

Lending frequency of books and other media

Provincial Library 78,361

Other Cultural Facilities

Visitors

Phönix Theatre 22,891

Stadtwerkstatt (City Art Workshop) 15,500

Linzer Cellar Theatre 4,825

Chamäleon - First Variety Theatre of Linz 6,000

| | Visitors |
|-------------------------------------|----------|
| KAPU Culture Centre | 10,800 |
| Culture Centre HOF | 35,000 |
| Architecture Forum of Upper Austria | 4,655 |

21 galleries and exhibition rooms

| Cinemas | seats | Visitors |
|------------------|---------------------------|----------------------|
| City Cinema | 193 (2 movie theatres) | 63,484 |
| Movimiento | 127 (3 movie theatres) | 65,420 |
| Cineplexx | 2.281 (10 movie theatres) | no figures available |
| Cinematograph | 35 | 1,403 |
| Dentistry Museum | | 1,414 |
| Cowboy Museum | | 3,300 |

Events

| | Visitors |
|---|----------|
| Ars Electronica Festival | 31,500 |
| Bruckner Classical Music Festival | 10,654 |
| Acoustic “Clouds” [Klangwolken] (Classical and visualized) | 103,000 |
| Acoustic “Cloud” for children | 4,000 |
| Film festival “Crossing Europe” | 13,000 |
| Festival of the Regions | 15,000 |
| LinzFest (Linz Festival) | 30,000 |
| Pflasterspektakel (street performances) | 220,000 |
| Cultural summer music pavilion of the “Sparkasse” Bank | 5,935 |
| Serenade concerts in the arcade courtyard of the “Landhaus” | 1,644 |
| voestival – voestalpine Factory Cultural Festival | 3,600 |

■ Education

Educational facilities

(School year 2007/2008)

Schools owned by the city of Linz

pupils and students **14,641**

36 primary schools 6,139

15 secondary modern schools (junior high schools) 3,416

3 schools for the mentally handicapped 259

2 polytechnical schools 369

Music schools owned by the city of Linz: 4,458

Schools owned by the province of Upper Austria

9 vocational schools 9,887 students

Provincial school for persons with hearing and seeing handicaps 236 students

Federal schools

Teacher training elementary and secondary modern school 344 students

10 general high schools 8,078 students

12 vocational high schools 8,152 students

Schools with diverse supporting institutions

4 private elementary schools, 4 private secondary modern schools 1,307 students

General High School solarCity of the city of Linz (private school with public institutional legal structure) 231 students

High school (college preparatory) and economics high school of the school association of the Sisters of St. Francis 562 students

Pedagogical College for nursery school teachers 255 students (Sisters of St. Francis) 255 students

| | |
|---|--------------|
| Petrinum Catholic High School | 512 students |
| Aloisianum High School | 285 students |
| Senior high school of the diocese of Linz | 465 students |

Universities

| | |
|----------------------------|------------------------|
| Johannes Kepler University | 13,414 students |
| College of Law | 4,833 |
| Social-economic college | 8,246 |
| College of Science | 3,570 |

| | |
|---|----------------|
| University of Art | 1,004 students |
| Anton Bruckner Private University (music, acting) | 940 students |
| Catholic-Theological Private University | 482 students |

Technical College of Higher Education ("Fachhochschule")

640 students

Curricula

| | |
|---------------------------------------|-----|
| Medical technology | 180 |
| Social management | 90 |
| Administrative management | 80 |
| Social work | 210 |
| Social- and administrative management | 60 |
| Services of General Interest | 20 |

Colleges

Supported by the Federal Government

| | |
|---------------------------------|--------------|
| Teachers' College | 556 students |
| College for Vocational Teachers | 147 students |

Supported by the diocese

| | |
|---------------------------------|----------------|
| Teachers' College | 1,177 students |
| Religious Pedagogical Institute | 4,384 students |

Adult education

| | |
|-------------------------|--------------------------------|
| Adult Education Centre* | 23,653 participants in courses |
| BFI** | 20,840 participants in courses |
| WIFI*** | 38,000 participants in courses |

*City of Linz and Chamber of Workers

**Berufsförderungsinstitut – Chamber of Workers

***Wirtschaftsförderungsinstitut – Chamber of Commerce

Further educational centres

Educational centre of the Chamber of Workers
“Jägermayrhof”

Educational centre St. Magdalena

Educational centre of the diocese of Linz “Betriebsseminar”

Educational centre “pro mente” (for the handicapped)

Educational centre primarily for women : “Haus der Frau”

Economy

Businesses in Linz **6,292**

| | |
|---|-------|
| Industry, handwork | 740 |
| Trade | 1,296 |
| Restaurant and hotel trade | 546 |
| Agriculture and forestry | 20 |
| Private and public services | 3,690 |
| Of the above: | |
| Transport and message transmission | 272 |
| Banks and insurance agencies | 161 |
| Legal and economic services | 1,615 |
| Public administration, social insurance | 122 |

| | |
|---|-----|
| Education | 104 |
| Health and social services | 563 |
| Associations, groups representing certain interests | 399 |
| Culture and sports | 117 |
| Other | 337 |

Licensed businesses 14,777

Workplaces **203,139**

| | |
|---------------------------|---------|
| Women | 95,537 |
| Men | 107,602 |
| Of the above: independent | 10,087 |

According to branch:

| | |
|---|--------|
| Agriculture and forestry | 353 |
| Energy, water | 2,919 |
| Chemicals, glass, stone | 3,830 |
| Production and processing of metal | 10,157 |
| Machines, electrotechnology, vehicles | 7,477 |
| Food and drink | 2,896 |
| Publishing and printing | 1,603 |
| Textiles, leather, wood, plastic, jewellery | 2,008 |
| Construction | 13,087 |
| Restaurant and hotel trade | 3,794 |
| Trade and storage | 26,210 |
| Health and social services | 16,678 |
| Lending and insurance | 10,598 |
| Transport and transmission of messages | 5,642 |
| Education | 3,822 |
| Culture, sports, entertainment | 1,370 |
| Data processing, services, research, real estate | 31,726 |
| Public administration, representation of interests, social insurance, associations | 33,915 |
| Officials | 14,967 |
| Independent persons | 10,087 |

Percentage jobless

Average for 2007

3.4 Percent

Top Ten Employers

(January 2008 - located in Linz)

| | Employees |
|--|-----------|
| voestalpine | 9,900 |
| Siemens | 3,620 |
| ÖBB (federal railways) | 3,600 |
| MCE | 2,752 |
| LINZ plc. (public transport, energy, etc.) | 2,714 |
| Raiffeisenlandesbank (bank) | 2,045 |
| Schachermayer | 1,309 |
| Plasser & Theurer | 1,150 |
| Borealis | 1,100 |
| Quelle | 1,000 |

Average monthly gross income

Men: 2,765 euros (that is 361 euros above the average income for all Austrian men)

Women: 1,641 euros (that is 29 euros above the average income for all Austrian women)

■ Tourism

Hotels, hostels, etc.

| | Beds |
|-------------------------------------|--------------|
| Total | 4,798 |
| 10 Four star hotels | 1,696 |
| 12 Three star hotels | 1,215 |
| 24 Two- and one star accommodations | 1,535 |
| 1 Youth hostel | 236 |
| 3 Other accommodations | 73 |
| 4 Private guest rooms | 43 |

Overnight stays 2007

| | |
|----------------------------------|----------------|
| Total | 675,834 |
| Average duration of stay (days): | 1.74 |
| Guests - Inland | 321,420 |
| Average duration of stay (days): | 1.71 |
| Guests - foreign | 354,414 |
| Average duration of stay (days): | 1.78 |
| Guests from: Germany | 156,651 |
| Italy | 28,353 |
| USA | 11,696 |
| Netherlands | 11,341 |
| Switzerland and Liechtenstein | 10,987 |

■ Environment

Climate

Central Europe;

Average monthly temperature (value averaged over many years): -1.6° in January and February and up to 20 degrees in the summer months July and August.

Average precipitation: ca. 50 mm in the months from October to April, up to 95 mm in the summer months.

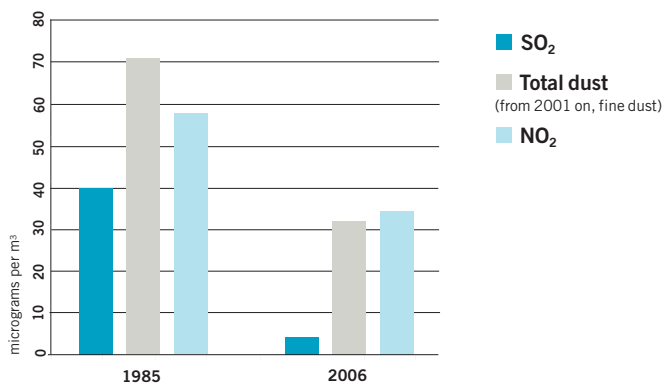
Average monthly temperature (value averaged over many years) 1961 - 1990: 8.8° C.

Air quality

Formerly Linz had a negative image in respect to its environmental situation because it is an industrial city. It has been able to make considerable improvements and improve its image by putting into effect a package of strict measures from the middle of the 1980s up until the present. It was possible to reduce the emissions of the air pollutants sulphur dioxide (SO₂), fine dust and nitrogen dioxide (NO₂) from about 47,000 metric tons in 1985 to about 14,000 metric tons per year.

Development of the air pollution in Linz resulting from SO₂, NO₂ and dust

(Source: average annual values from all measuring stations in the area of Linz)



Comparison of the air quality in large Austrian cities Average yearly value for 2006

(Average value for urban area)

| Area of pollution | SO ₂ µg/m ³ | PM ₁₀ µg/m ³ | NO ₂ µg/m ³ | Total µg/m ³ |
|-------------------|--------------------------------------|---------------------------------------|--------------------------------------|----------------------------|
| Vienna | 4.3 | 31.6 | 33.9 | 69.8 |
| Linz | 4.2 | 32.2 | 34.6 | 71.0 |
| St. Pölten | 4.0 | 32.5 | 36.0 | 72.5 |
| Klagenfurt | 7.0 | 35.0 | 38.0 | 80.0 |
| Salzburg | 4.9 | 30.7 | 45.7 | 81.3 |
| Innsbruck | 5.0 | 33.5 | 47.5 | 86.0 |
| Graz | 5.8 | 42.8 | 40.6 | 89.2 |

Green area that belongs to the city

hectares

Total (more than ten percent of the surface area of the city) **1,005.14**

Public green areas 302.16

Green transport areas 78.18

Green areas near nursery schools and schools 44.39

| | hectares |
|--|----------|
| Green areas near homes for senior citizens | 6.94 |
| Plant and tree nurseries | 4.83 |
| Botanical Garden | 4.20 |
| Arboretum | 8.48 |
| Woods that belong to the city | 555.96 |

Green areas that belong to the consortium of the City of Linz

| | hectares |
|---|----------|
| LINZ AG | 379.06 |
| GWG | 58.24 |
| Green areas that belong to the apartment provider GWG | |

■ Transport

Parking garages

Parking places in garages in the inner city 7,584 places

| | |
|---|------------|
| 1. Garage Lentia 2000 Gstöttnerhofstraße | 320 places |
| 2. Multi storey car park Grünmarkt Kaarstraße | 213 places |
| 3. Garage New City Hall Flußgasse | 102 places |
| 4. Medicent Garage Untere Donaulände | 260 places |
| 5. Arcotel-Garage Untere Donaulände | 300 places |
| 6. Lentos subterranean garage Untere Donaulände | 43 places |
| 7. Garage Pfarrplatz | 244 places |
| 8. Main square subterranean garage | 377 places |
| 9. Museum Garage Elisabethstraße | 237 places |
| 10. City Multi Storey Car Park Linz Bethlehemstraße | 650 places |
| 11. Subterranean garage Promenade Opening end of 2008 | 502 places |
| 12. General Hospital (AKh) - subterranean garage Krankenhausstraße and Darrgutstraße | 793 places |

| | |
|---|------------|
| 13. General Hospital (AKh) - subterranean garage Weißewolfstraße | 404 places |
| 14. Downtown Garage Dametzstraße | 400 places |
| 15. Garage Südbahnhof Khevenhüllerstraße | 600 places |
| 16. Parking Garage Hessenplatz Fadingerstraße | 191 places |
| 17. Mozart-City-Garage Dametzstraße | 200 places |
| 18. Central-Parking Garage Rudigierstraße | 420 places |
| 19. Design Center subterranean garage Prinz-Eugen-Straße | 275 places |
| 20. Multi Storey Car Park Blumau Scharitzerstraße | 165 places |
| 21. Subterranean garage Gärtnerstr./Coulinstr. | 99 places |
| 22. Garage Provincial Service Centre ("Landesdienstleistungszentrum" Kärntnerstraße | 255 places |
| 23. Train station 2 garages Kärntnerstraße (Hotel Ibis) | 190 places |
| 24. Train station 1 garage Kärntnerstraße | 344 places |



■ Transport system

| | |
|--------------------|----------------|
| Network of streets | 570 kilometers |
| Cycle paths | 129 kilometers |

Short-term paid parking places (parking meters) 6,148

| | |
|---------------------------------------|-------|
| Of these: in the central area of Linz | 5,104 |
| Centre of Urfahr District | 638 |
| Auhof | 248 |
| Kaplanhof District | 158 |

| | |
|-----------------------|---------|
| Total motor vehicles | 116,493 |
| Number of automobiles | 90,320 |

Transport connections

Motorways (Autobahnen)

- A1** West Motorway towards Vienna, Budapest, Salzburg, Munich
- A25** Innkreis Motorway from the Haid intersection towards Wels,
- A8** From Wels towards Passau, Regensburg;
From the “Voralpen” intersection
- A9** Towards Kirchdorf, Graz
- A7** “Mühlkreis” Motorway towards Freistadt, Prague

Railway Connections

Intercity- und Euro-City-connections via Vienna, Salzburg, Graz and Prague to numerous European cities.

Air transportation (www.linz-airport.com)

blue danube airport Linz. Scheduled flights to and from Frankfurt, Dusseldorf, London, Palma, Cologne, Vienna, Graz, Salzburg, Munich and Barcelona.

Danube

The Rhein-Main-Danube-Waterway is an important route for the transportation of goods, and it plays a vital role in the economy of Linz.

In 2007 5.7 million metric tons of freight were loaded

or unloaded from boats in Linz: About 4.6 million metric tons in the harbour of the voestalpine steel plant and 1.1 million tons in the harbour of Linz. About 800,000 passengers (regular service boats, excursions and cruises) travelled on the Danube.

Public transport - local

LINZ plc. LINES

| | |
|---|--|
| Area served | Linz and 9 communities |
| Network | 181.1 kilometers |
| Vehicles | 167 |
| Passengers (total) | 94.5 million |
| 3 streetcar lines | Total length: 21.2 kilometers |
| 22 bus lines | Total length: 138.1 kilometers |
| 4 trolley bus lines | Total length: 19.1 kilometers |
| Pöstlingberg Train passengers | Length of route: 2.9 kilometers 470,000 |
| AST – Collective taxi that can be ordered by phone with 295 stops | 175,817 passengers |

Monthly ticket with the active passport (Aktivpass): Since **1.1. 2007** all people whose main place of residence is Linz and who have a net monthly income not exceeding 1,018 euros are entitled to an active passport of the city. With this document they can purchase a monthly ticket on the LINZ plc LINES for **ten euros**. It normally costs 33.10 euros.

Jobticket: An initiative of the city of Linz and LINZ plc which began on January 1st 2007 makes it easier to decide to travel by public transportation instead of by car. If a firm in Linz pays 2 euros monthly for each employee, they are entitled to purchase a yearly jobticket from the LINZ plc. LINES for **209.40 euros** instead of the normal **349.– euros**.

Local train of Linz

From Linz via Eferding to Waizenkirchen and back.

| | |
|-----------------|-----------------|
| Length of route | 58.6 kilometers |
| Passengers | 1,680,000 |

■ Supplying of heat and electricity, etc. and waste removal - LINZ plc.

LINZ STROM GmbH (electricity provider)

| | |
|---|----------|
| Our own production (in gigawatt hours) | 974 |
| Annual maximum demand (in megawatts) | 383 |
| From the plants of our clients | 240,862 |
| Amount of electric current sold (in gigawatt hours) | 1,889.34 |

LINZ GAS/WÄRME GmbH (gas and heating)

District heating

| | |
|----------------------------------|-----------|
| Interconnecting stations | 2,423 |
| Apartments supplied* | 48,741 |
| Heat sold (in gigawatt hours) | 745.53 |
| Connected wattage (in megawatts) | 604 |
| Pipeline network* | 221.01 km |

Gas

| | |
|---|---------------|
| Gas customers* | 44,737 |
| Gas sales (in cubic meters) | 125.3 million |
| Apartments supplied* | 41,652 |
| Pipeline network under our supervision* | 510.2 km |

LINZ SERVICE GmbH

Water

| | |
|-------------------------------|--------------|
| Water sales (in cubic meters) | 20.4 million |
| Houses supplied in Linz | 17,963 |

Sewage

| | |
|------------------------------|-----------------------------|
| Canal network in Linz* | 559.1 km |
| Sewage treatment plant Asten | 60.1 million m ³ |

(Sewage from Linz and 39 surrounding communities)

* In the city area of Linz

Harbour

Total performance 3.1 million metric tons

Swimming pools

Visitors to pools and saunas 907,437

Cemeteries

Burials and cremations 4
1,711

Waste management

Amount collected **94,386 metric tons**

Biodegradable waste 12,156 metric tons

Waste paper 18,522 metric tons

Plastic materials 3,385 metric tons

Tailings (residual material) 39,458 metric tons

Other (glass, metal, etc.) 20,865 metric tons

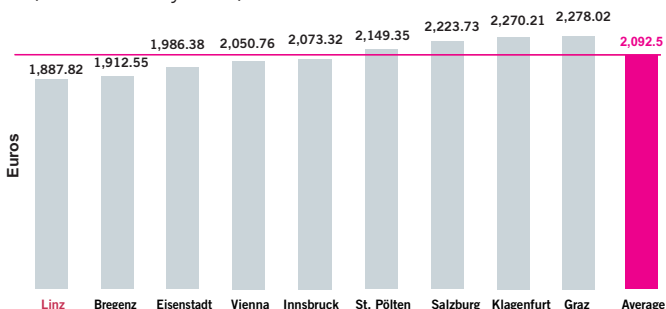
LINZ LINIEN GmbH (Linz Public Transportation Lines Ltd.)

Persons transported 94.5 Million

Comparison of household costs in various cities

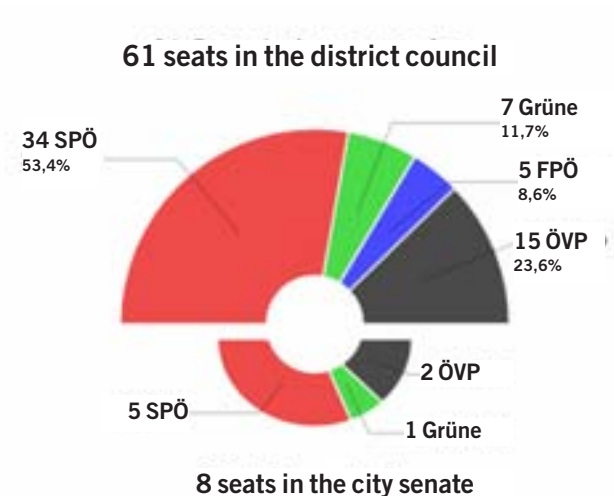
Energy- and infrastructure costs for a 4-person household

for electricity, natural gas/district heating, water, sewage and waste in an apartment building with 20 flats, each of which has an area of 95 m², in a single year (Status: January 2008).



Politics

Distribution of seats in district council and city senate (election of 28. September, 2003)



City senate

8 seats: 5 SPÖ (social democrats), 2 ÖVP (conservatives), 1 GRÜNE (green party).

Mayor Franz Dobusch (SPÖ), since 21. January, 1988:

Head of the city administration, media, police, fire department. Chairman of the supervisory board of the LINZ plc. and LIVA - Linzer Veranstaltungsgesellschaft mbH (cultural events).

1. Vice Mayor Ingrid Holzhammer (SPÖ):

Social affairs (voluntary social benefits, affairs of youth-, family- und seniors). Chair of the supervisory board of the SZL - Seniorenzentren Linz GmbH (Centre for Seniors).

2. Vice mayor Christiana Dolezal (SPÖ):

Nature and environmental protection, health matters, restoration of bodies of water to their natural condition, canal-, harbour- and river engineering and bridge construction, waste management, industrial plants, General Hospital of Linz, sports. Chairman of the supervisory board of the LINZ SERVICE GmbH (subsidiary of LINZ plc.), AKh-(General Hospital of the City of Linz) GmbH.

3. Vice Mayor Dr. Erich Watzl (ÖVP):

Culture, music school, public libraries, museums, archive, tourism, housing matters, training of apprentices and technical colleges of higher education. Chairman of the supervisory board of the AEC - Ars Electronica Center Museumsgesellschaft mbH and Linz 2009 - Kulturhauptstadt Europas Organisationsgesellschaft mbH (corporation for the organization of the European cultural capital city of 2009).

City councillor Jürgen Himmelbauer (GRÜNE):

Transport planning, transport surfaces and transport facilities; street policing. Chairman of the supervisory board of LINZ LINIEN GmbH (subsidiary of LINZ plc. for public transportation).

City councillor Klaus Luger (SPÖ):

Regional development planning, matters relating to construction law and municipal building inspection, personnel matters.

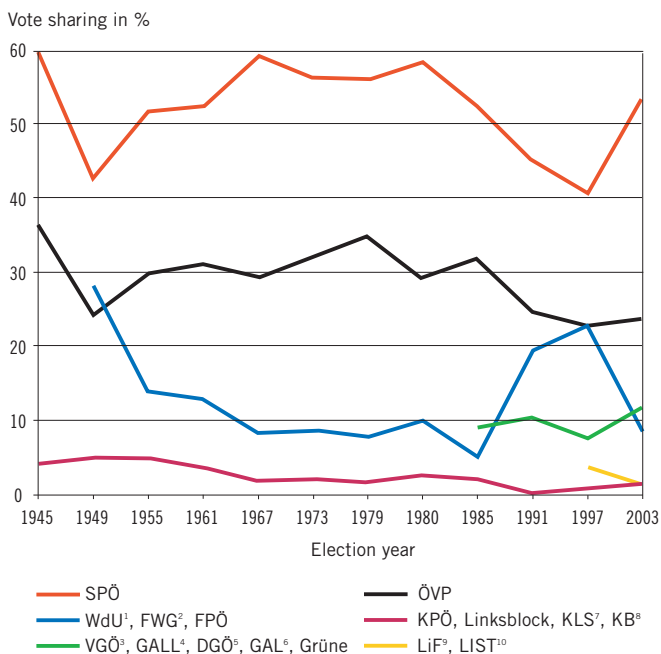
City councillor Johann Mayr (SPÖ):

Financial and asset management, real estate, schools and educational matters, overground building construction. Chairman of the supervisory board of the GWG – Non-Profit-Making Housing Organization of Linz plc., DC - Design Center Linz Betriebsgesellschaft mbH (trade fairs, etc.), ILG - Immobilien Linz GmbH (real estate).

City councillor Susanne Wegscheider (ÖVP):

Promotion of economic development, commercial enterprises, markets, area for new commercial enterprises “Südpark”, green areas. Chair, supervisory board of the TechCenter (commercial centre).

Results of the district council elections of the city of Linz since 1945



¹ Wahlpartei der Unabhängigen (Independent Party)

² Freiheitliche Wahlgemeinschaft (Freedom Party Cooperative)

³ Vereinte Grüne Österreichs (United Green Party of Austria)

⁴ Grün-Alternative Liste Linz (Green-Alternative List of Austria)

⁵ Die Grünen Österreichs (Austrian Green Party)

⁶ Grün-Alternative Liste (Green Alternative List)

⁷ Kommunisten und Linksozialisten (Communists and Left-Wing Socialists)

⁸ Kommunistischer Block (Communist Block)

⁹ Liberales Forum (Liberal Forum)

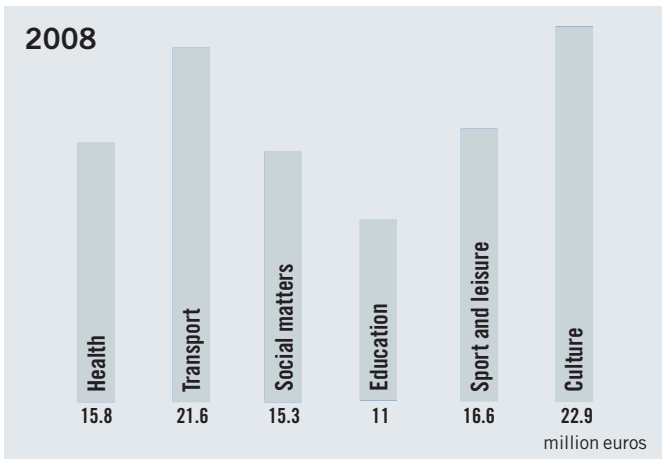
¹⁰ Liberale Stadtpartei (Liberal City Party)

Budget

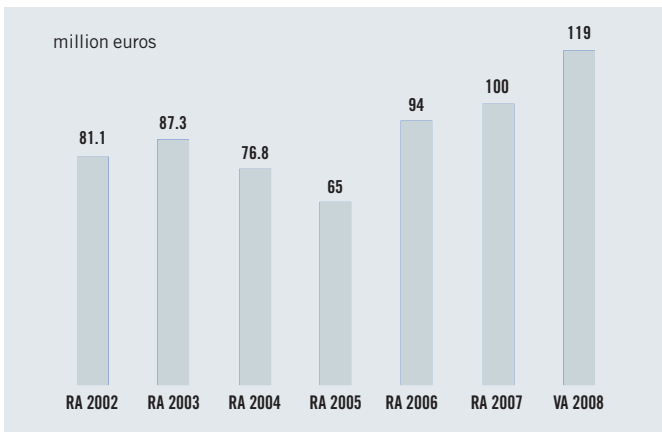
Estimate 2008

| | |
|--|---------------------|
| Budget | 625.9 million euros |
| Investments | 119.0 million euros |
| (including all subsidiary companies that have been spun off) | |

Focus of investments according to specialized area



Investments 2001 – 2008



(RA = after closing of the accounts, VA = estimate)

Amount available

| | |
|---|-------------------|
| (Surplus in regular budget) According to estimate 2008 | 7.1 million euros |
|---|-------------------|

Assets

| | |
|---------------------------|---------------------|
| (Status: 1. January 2008) | 2,139 million euros |
|---------------------------|---------------------|

Major assets

| | |
|---|---------------------|
| Shares in companies as well as stocks and bonds | 1,084 million euros |
| Plots of land | 508 million euros |
| Buildings | 302 million euros |

The assets of the city of Linz are about six times greater than the liabilities (borrowed amounts). This public property gives the city of Linz considerable leeway in its efforts to maintain the quality of life.

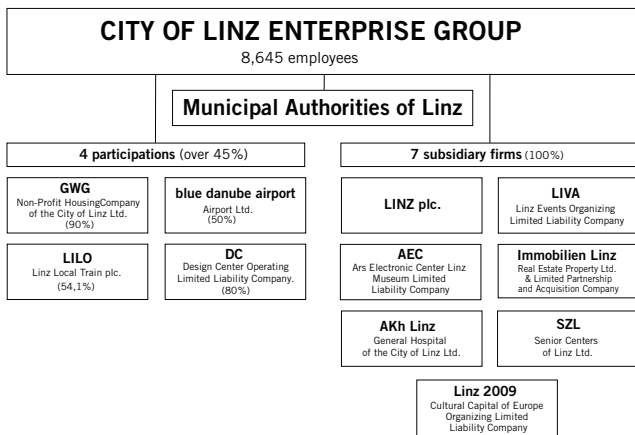
Tax revenue

| | |
|----------------------------|---------------------|
| Revenue from federal taxes | 196.7 million euros |
| Revenue from taxes of Linz | 152.4 million euros |

Major local tax revenue sources

| | |
|----------------------|---------------------|
| Communal fees | 115.8 million euros |
| Tax on plots of land | 17.5 million euros |

City of Linz Enterprise Group



Total employees* 8,645

Earnings from turnover 2007 1,252.08 million euros

The City of Linz Enterprise Group is the largest service provider in the provincial capital. Approximately 8,700 employees assure that the city functions smoothly.

*In equivalents of full-time jobs.

Municipal authorities of Linz

Employees including apprentices 2,588

Service providers among the municipal authorities

| | |
|--|-----|
| Facility Management | 711 |
| Child and youth services | 666 |
| Fire department | 188 |
| Music school | 92 |
| Public education centre and city library | 76 |
| City museums of Linz | 30 |

■ Subsidiaries (100%)

LINZ plc.

LINZ STROM GmbH (electricity)
LINZ GAS/WÄRME GmbH (gas and heating)
LINZ SERVICE GmbH (services)
LINZ LINIEN GmbH (public transport)
MANAGEMENT SERVICE LINZ GmbH

| | |
|-------------------------------|----------------------|
| Total employees | 2,643 |
| Investments | 145.29 million euros |
| (including those of the city) | |

| | |
|----------------------------|----------------------|
| Revenue from turnover 2007 | 507.33 million euros |
|----------------------------|----------------------|

AKh

General Hospital of the City of Linz Ltd.

21 departments and institutes
65 outpatient departments
989 beds
55,700 in-patients discharged
31,000 surgical operations

| | |
|----------------------------|----------------------|
| Total employees | 2,300 |
| Investments | 19.45 million euros |
| Revenue from turnover 2007 | 179.50 million euros |

SZL

Senior Citizens' Centres of Linz Ltd.

8 senior citizens' centres
3 day centres
17 clubs (Club Aktiv)

| | |
|----------------------------|---------------------|
| Total employees | 681 |
| Revenue from turnover 2007 | 34.15 million euros |

LIVA

Linzer Veranstaltungsgesellschaft mbH
(organizes events and performances)

Culture

| | |
|---------------------------------|--------------------------------------|
| Brucknerhaus | 160,000 visitors 215 performances |
| Posthof (music, dance, cabaret) | 81,000 visitors 250 performances |
| Children Cultural Centre | 14,100 visitors 199 performances |

Sports

| | |
|--------------------------------------|---|
| Intersport Arena | 147,000 visitors 35 matches and events |
| Linzer Stadion | 163,000 visitors 34 matches and events with 13,900 participants |
| Tennis Centre in Froschberg District | 23,500 users |
| Sports park Auwiesen | 52,600 users |
| Sports park Lissfeld | 47,000 users |
| Total employees | 97 |
| Revenue from turnover 2007 | 13.69 million euros |

AEC

Ars Electronica Linz GmbH (Museum of the Future)

56,469 visitors
65 workshops with 423 participants
1,915 guided tours with 27,649 participants
110 guided tours on children's birthdays with 908 participants

| | |
|----------------------------|--------------------|
| Total employees | 38 |
| Revenue from turnover 2007 | 6.67 million euros |

LINZ 2009

European Capital of Culture
Organisationsgesellschaft mbH
(Company responsible for organization)

A total of 60 million euros have been made available to this company. A third has been provided by each of the following: federal, provincial and city government. In addition, sponsors will support various projects of LINZ 2009.

| | |
|--|----|
| Total employees | 28 |
| <hr/> (The number will be continually increased from now until 2009) | |

| | |
|----------------------------|-----------------|
| Revenue from turnover 2007 | 6 million euros |
| <hr/> | |

Property (real estate, buildings) Linz

| | |
|-----------------|---------------------|
| Investments | 32.01 million euros |
| Total employees | 1 |
| <hr/> | |

■ Participations

GWG

Gemeinnützige Wohnungsgesellschaft
der Stadt Linz GmbH (non-profit housing company)
90 percent participation

17,754 rental apartments
52 terraced (row) houses
597 owner-occupied flats
293 business building units
4,467 parking places in garages

| | |
|----------------------------|---------------------|
| Total employees | 95 |
| Investments | 31.70 million euros |
| Revenue from turnover 2006 | 57.47 million euros |
| <hr/> | |

DC

Design Center Linz Betriebsgesellschaft mbH
(operating company for trade fairs, etc.)
80 percent participation

Design Center und Bergschlößl (small palace on the
mountain)
309 events
217,263 visitors

| | |
|----------------------------|--------------------|
| Total employees | 19 |
| Revenue from turnover 2007 | 3.26 million euros |

LILLO

Linzer Lokalbahn AG (regional train)
54.1 percent participation

58.6 kilometer length of lines
14 railcars

| | |
|----------------------------|--------------------|
| Revenue from turnover 2007 | 1.75 million euros |
|----------------------------|--------------------|

blue danube airport linz

Flughafen Linz GmbH
50 percent participation

773,624 total passengers

465,507 passengers on scheduled flights
303,387 passengers on charter flights
4,730 alternative flights

| | |
|----------------------------|---------------------|
| Total employees | 155 |
| Revenue from turnover 2007 | 23.43 million euros |

Employees (calculated in number of equivalent full-time employees)

■ Contacts for services

Bürgerservice Center (Citizen service centre)

New City Hall, Hauptstraße 1 - 5,
Hotline 0732/7070-0, Fax 0732/7070-54-2222
Mon. to Fri. 7 a.m. - 6 p.m.
www.linz.at, e-mail: service@linz.at

Building service centre

New City Hall, Hauptstraße 1 - 5, 4th floor,
Tel. 0732/7070-3056 or 3066

Public libraries of the city – places where services for citizens are available

Wissensturm (“Tower of Knowledge”) Kärntnerstraße 26
Tel. 7070-0

Mon. and Tues. 10 a.m. - 6 p.m., Wed. 2 - 6 p.m.,
Thurs. and Fri. 10 a.m. - 6 p.m., Sat. 10 a.m. - 3 p.m.

AKh, Krankenhausstraße 9 Tel. 7806-1226
Mon. 9 - 12 a.m. and 2 - 5 p.m., Tues. 9 - 12 a.m., Wed.
9 - 12 a.m., Thurs. 9 - 12 a.m. and 2 - 5 p.m., Fri. 9 - 12 a.m.

Auwiesen, Wüstenrotplatz 3 Tel. 30 24 08
Mon. 11 a.m. - 1 p.m., 2 - 7 p.m., Wed. 9 a.m. - 1 p.m.,
2 - 5 p.m.

Bibliotheks-Center Urfahr, Hauptstraße 83 - 85
Tel. 7070-2953

Mon. 11 a.m. - 7 p.m., Tues. 9 a.m. - 5 p.m., Wed. 9 a.m. -
5 p.m., Thurs. 9 a.m. - 7 p.m., Fri. 9 a.m. - 2 p.m.

Dornach-Auhof, Sombartstraße 1 - 5 Tel. 2560-661
Mon. 11 a.m. - 1 p.m., 2 - 5 p.m., Tues. 9 a.m. - 2 p.m.,
Wed. 9 a.m. - 1 p.m., 2 - 7 p.m., Thurs. 9 a.m. - 2 p.m.,
Fri. 9 a.m. - 2 p.m.

Ebelsberg, Kremsmünsterer Str. 1-3 Tel. 30 89 92
Mon. 11 a.m. - 2 p.m., Tues. 9 a.m. - 1 p.m. and 2 - 5 p.m.,
Wed. 9 a.m. - 2 p.m., Thurs. 9 a.m. - 1 p.m. and 2 - 7 p.m.,
Fri. 9 a.m. - 2 p.m.

Einsteinstraße, Einsteinstraße 11 Tel. 33 02 15
Mo. 9 a.m. - 1 p.m. and 2 - 6 p.m., Wed. 9 a.m. - 1 p.m. and
2 - 5 p.m., Tues., Thurs., Fri. 9 a.m. - 2 p.m.

Franckviertel, Franckstraße 68 Tel. 61 47 14
Mon. 11 a.m. - 1 p.m. and 2 - 7 p.m.

Keferfeld-Oed, Landwiedstraße 65 Tel. 67 69 34
Mon. 11 a.m. - 1 p.m. and 2 - 5 p.m., Tues. 9 a.m. - 2 p.m.,
Wed. 9 a.m. - 1 p.m. and 2 - 7 p.m., Thurs. 9 a.m. - 2 p.m.,
Fri. 9 a.m. - 2 p.m.

Neue Heimat, Lilienthalstraße 5 Tel. 38 28 44
Mon. 11 a.m. - 1 p.m. and 2 - 7 p.m., Wed. 9 a.m. - 1 p.m.
and 2 - 5 p.m., Thurs. 9 a.m. - 2 p.m.

Pichling, Lunaplatz 4 Tel. 32 11 73
Mon. 12 noon - 5 p.m., Tues. 9 a.m. - 2 p.m., Wed. 9 a.m. -
1 p.m. and 2 - 7 p.m., Thurs. 9 a.m. - 2 p.m., Fri. 9 a.m. -
2 p.m.

LINZ plc. for energy, telecommunication, transport and communal services, www.linzag.at

Service numbers (Mon. to Fri. 7 a.m. – 6 p.m.) and e-mail:

LINZ AG Tel. 0732/3400-4000
info@linzag.at

LINZ AG STROM Tel. 0732/3400-5000
strom@linzag.at

Speed-Web Tel. 0732/3400-5010
speed-web@linzag.net

LINZ AG ERDGAS Tel. 0732/3400-8000
erdgas@linzag.at, natural gas hotline 128

LINZ AG WÄRME Tel. 0732/3400-9000
waerme@linzag.at

LINZ AG LINIEN Tel. 0732/3400-7000
linien@linzag.at

LINZ AG SERVICE (water supplying, sewage, waste remo-
val, swimming pools Tel. 0732/3400-6000
wasser@linzag.at, abwasser@linzag.at, abfall@linzag.at,
baeder@linzag.at

LINZ AG burials, cremations, cemeteries
Tel. 0732/3400-6700
bestattung@linzag.at, friedhoefe@linzag.at

LINZ AG Customer Centre

Landstraße 85, open Mo to Thurs. 8 a.m. – 5 p.m. and
Fri. 8 - 13 p.m. Tel. 0732/3400-4000

International dialing code +43 (732 for Linz)



Imprint:
 Owner and publisher of media: Municipal Authorities of Linz, City Communication of Linz, Hauptplatz 1, 4041 Linz; Editorial offices: City Communication of Linz; Translator: Stephen Sokoloff; Layout: Mag. Art. Gernot Polland; Printing: Gutenberg - Werbering Ltd.; www.linz.at; komm@mag.linz.at